

TO LET

Unit 1, South Campus, Old Glenarm Road, Larne, BT40 1EG

EXCELLENT WAREHOUSE ACCOMMODATION WITH ANCILLARY OFFICES C. 71,000 SQ FT



Commercial Real Estate
From every angle



OUTLINE FOR INDICATIVE PURPOSES ONLY

FEATURES

6no. overhead gantry cranes and
2no. jibs

Circa 6.5m eaves

Dock leveller / covered loading bay

LOCATION

South Campus benefits from good frontage onto the Old Glenarm Road providing easy access to the A8 dual carriageway towards Belfast City Centre and and both Belfast Airports as well as the ports at Belfast and Larne.

1 mile to Larne Port

23 miles to Belfast City Centre

23 miles to Belfast Port

23 miles to Belfast International Airport

26 miles to Belfast City Airport

Larne Port is Northern Ireland's second largest port, facilitating both commercial freight and private vehicles.

The port handles over 300,000 freight units each year as well as 220,000 tourist vehicles and 845,000 passengers.



DESCRIPTION

Unit 1 provides warehouse accommodation of circa 71,000 sq ft which includes a small office/amenity block, staff canteen and W.C. facilities.

The property benefits from 6.5m eaves, 6 overhead gantry cranes, 2 jibs, 1 dock leveller with covered loading bay, LED lighting and 3 phase electricity.

There are also in excess of 400 shared car parking spaces on site and additional hardstanding is available if required.

LEASE DETAILS

Rent: £213,000 pax

Term: By negotiation

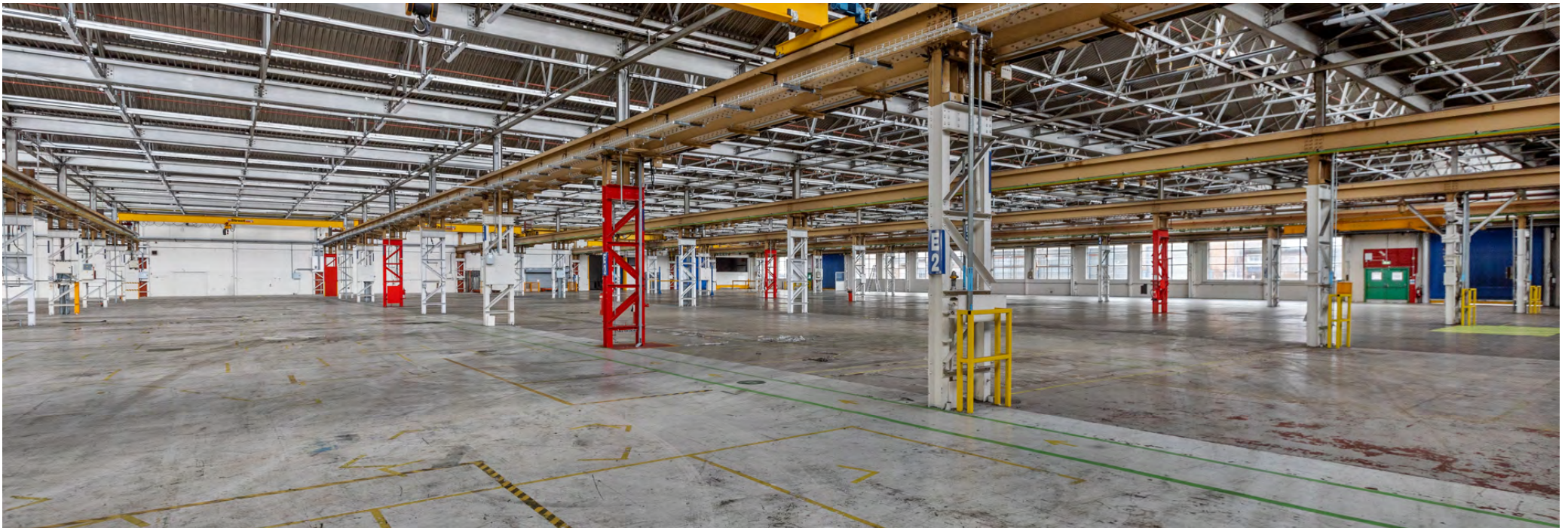
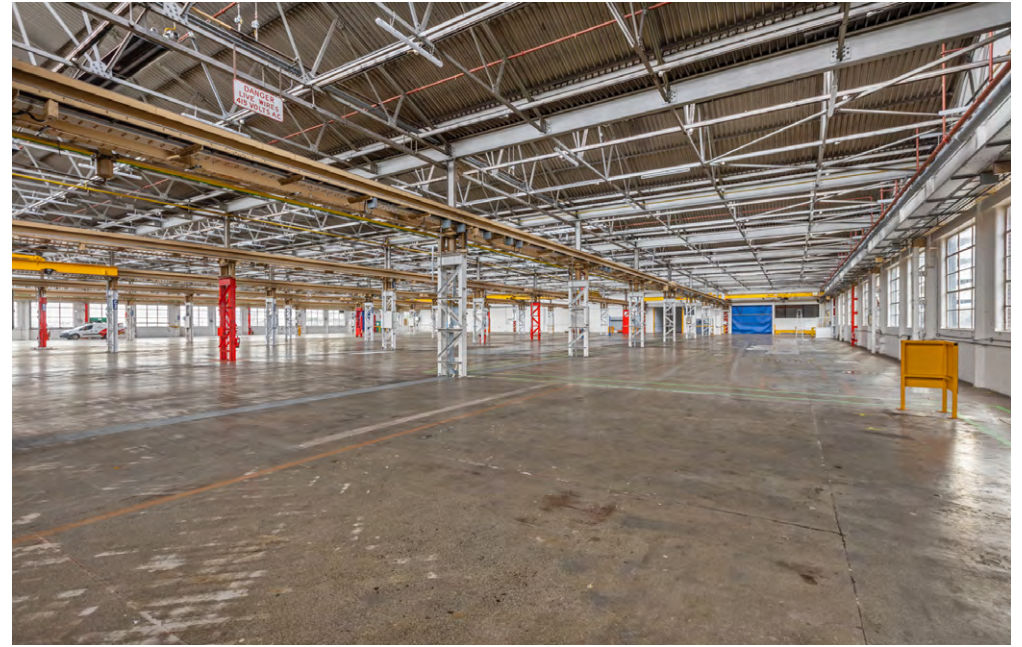
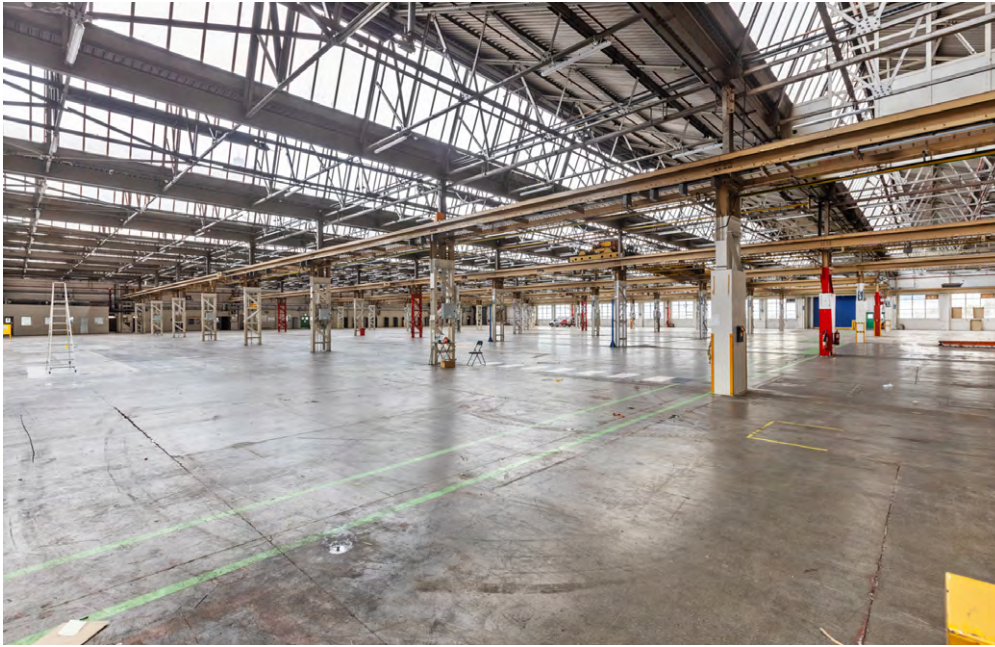
Repairs: Tenants are responsible internal repairs and external repairs (by way of Service Charge)

Service Charge: A Service Charge will be levied to cover the cost of services such as security, estate management, maintenance of common areas etc.

Insurance: Tenants will be responsible for reimbursing the Landlord with the cost of the insurance premium for their unit







LOCATION



RATES PAYABLE

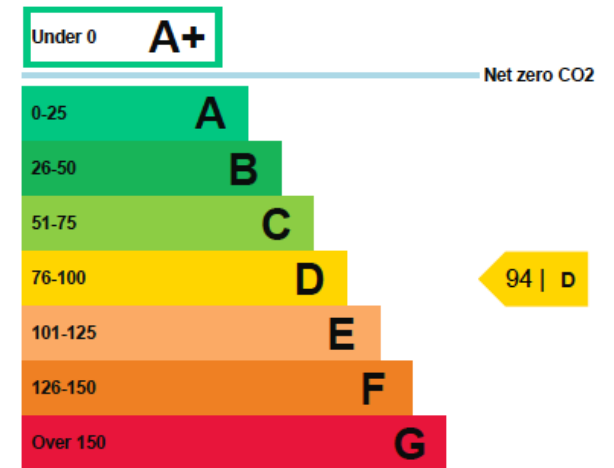
Please contact the agent for further information.

VAT

We are advised that the subject property is VAT registered and therefore VAT will be charged in addition to the rent.

EPC

The property has an Energy Efficiency rating of D94. The full Certificate can be made available upon request.



CUSTOMER DUE DILIGENCE

As a business carrying out estate agency work we are required to verify the identity of both the vendor and the purchaser as outlined in the following: The Money Laundering, Terrorist Financing and Transfer of Funds (Information on the Payer) Regulations 2017 - <https://www.legislation.gov.uk/uksi/2017/692/contents>. Any information and documentation provided by you will be held for a period of five years from when you cease to have a contractual relationship with Ambit CRE. The information will be held in accordance with General Data Protection Regulation (GDPR) on our client file and will not be passed on to any other party, unless we are required to do so by law and regulation.



Commercial Real Estate
From every angle

For further information:

Jonathan Haughey: 028 9050 1540 / 07718 571 498
jhaughey@ambit-cre.com

Viewing strictly by appointment with the sole letting agent Ambit CRE

AMBIT CRE

3rd Floor, Montgomery House
29-33 Montgomery St, Belfast BT1 4NX
Tel: 028 9050 1501
Email: property@ambit-cre.com

[ambit-cre.com](https://www.ambit-cre.com)  

The Directors of Ambit CRE for themselves and for the vendors or lessors of this property whose agents they are give notice that (i) the particulars are set out as a general outline only for the guidance of intended purchasers or lessors, and do not constitute part of, an offer or contract; (ii) all descriptions, references to condition and necessary permissions for use and occupation, and other details are given without responsibility and any intending purchasers or tenants should not rely on them as statements or representations of fact but must satisfy themselves by inspection or otherwise as to the correctness of each of them; (iii) no person in the employment of the Directors of Ambit CRE has any authority to make or give any representation or warranty whatever in relation to the property.

